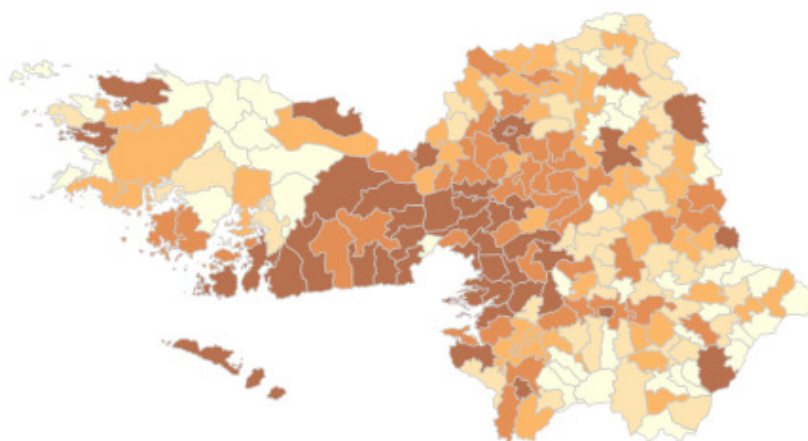
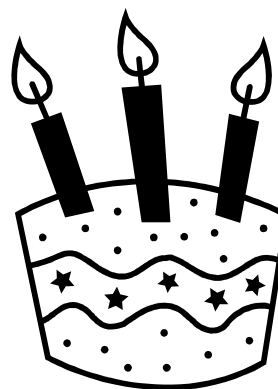


## Census 2011 – Results for County Galway

### Age Profile



## Table of Contents

		<b>Page</b>
Summary		3
Table 1	Number and Proportion of Population by Age Categories 2011 for Galway County, Galway City and the State	4
Figure 1	Proportion of Population by Age Categories 2011, Galway County, Galway City & the State	5
Table 2	Number and Proportion of Population by Age Categories 2011 for Galway County, Galway City and the State	6
Figure 2	Proportion of Population by Age Categories 2011, Galway County, Galway City & the State	6
Table 3	Population by Age Categories County Galway 2011 & % Change in Population	7
Figure 3	% Change in Population 2006 - 2011 in County Galway by Age Category	8
Table 4	Average Age of Males and Females in County Galway in Aggregate Rural and Town Areas 2006 & 201	8
Table 5	Age Dependency* Rates 2006 & 2011, Galway County, Galway City and the State	9
Table 6	Population Aged 65 Years and Over Living Alone by Sex in County Galway 2011	9
Table 7	Proportion of Population in the State aged 65 years and over Enumerated at their Usual Place of Residence	10
Figure 4	Proportion of Population in the State aged 65 years and over Enumerated at their Usual Place of Residence	10

## Summary

### Age Profile

- In County Galway in 2011 the largest proportion of people were in the 35 – 39 age category (8.1%)
- County Galway has a larger proportion of people in the age category 0 – 19 and all ages over 35
- The City has a much larger proportion of people in the 20 – 34 age category than in the County

### Changes in Age Profile

- Between 2006 – 2011 in County Galway the 60 – 64 age category saw the biggest increase in people followed by the 0 – 4 age category
- The 25 – 29 age category saw the biggest decrease in people followed by the 15 – 19 age category.
- County Galway's total age dependency has grown from 51.7% in 2006 to 54.4% in 2011.
- Galway City (34.9%) has a much lower total age dependency rate than Galway County (54.4%).

### Living Arrangements

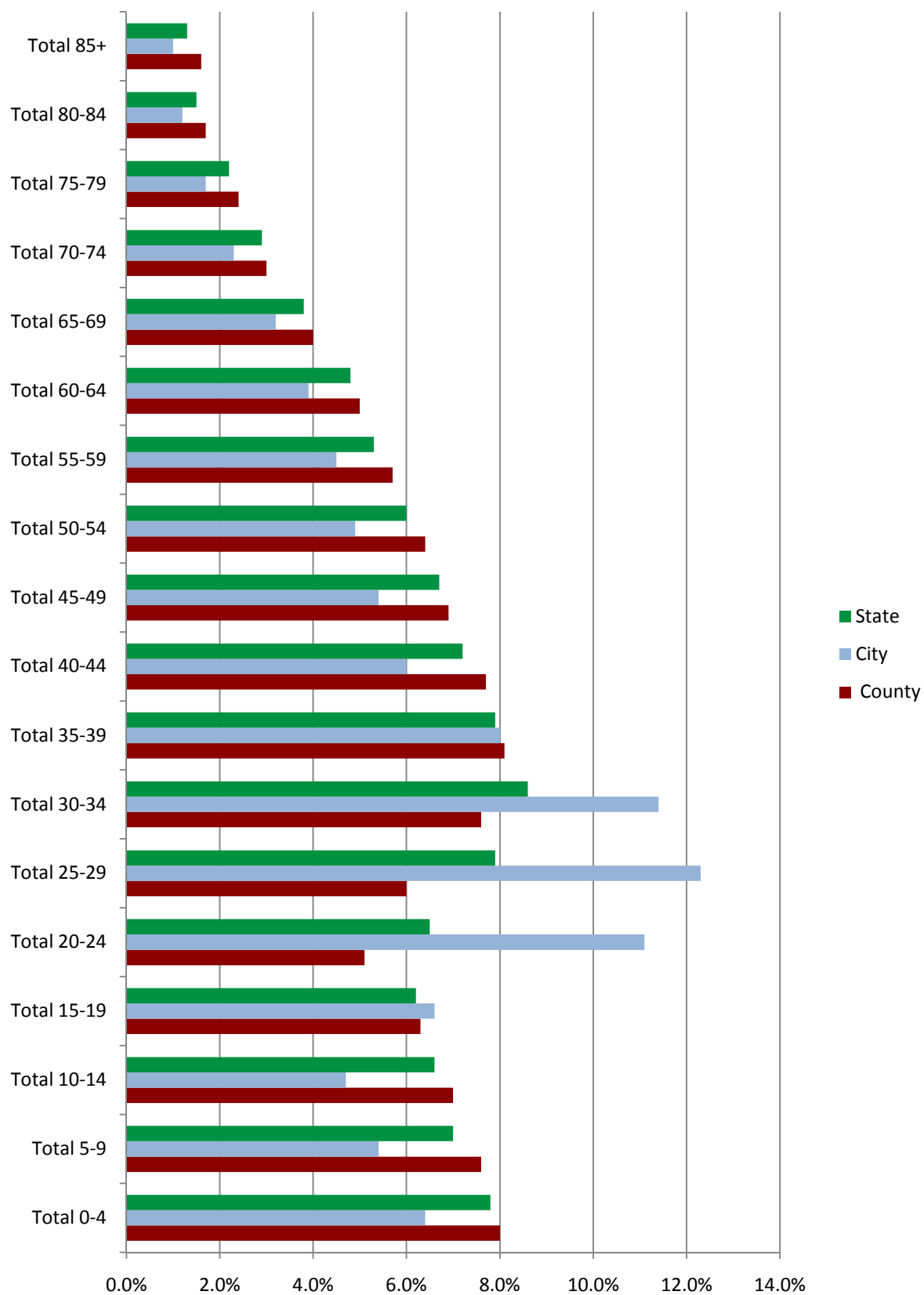
- Older females are more likely to live alone than older males
- As the population gets older people are less likely to be in Private Households and more likely to be in a nursing home or hospital

**Table 1** Number and Proportion of Population by Age Categories 2011 for Galway County, Galway City and the State

Age Category	County Galway		Galway City		State	
	No	%	No	%	No	%
<b>Total 0-4</b>	14,091	8.0%	4,869	6.4%	356,329	7.8%
<b>Total 5-9</b>	13,310	7.6%	4,046	5.4%	320,770	7.0%
<b>Total 10-14</b>	12,292	7.0%	3,578	4.7%	302,491	6.6%
<b>Total 15-19</b>	10,970	6.3%	4,953	6.6%	283,019	6.2%
<b>Total 20-24</b>	8,971	5.1%	8,373	11.1%	297,231	6.5%
<b>Total 25-29</b>	10,497	6.0%	9,302	12.3%	361,122	7.9%
<b>Total 30-34</b>	13,235	7.6%	8,598	11.4%	393,945	8.6%
<b>Total 35-39</b>	14,131	8.1%	6,051	8.0%	364,261	7.9%
<b>Total 40-44</b>	13,451	7.7%	4,540	6.0%	330,812	7.2%
<b>Total 45-49</b>	12,160	6.9%	4,072	5.4%	305,185	6.7%
<b>Total 50-54</b>	11,198	6.4%	3,726	4.9%	274,386	6.0%
<b>Total 55-59</b>	10,038	5.7%	3,415	4.5%	244,522	5.3%
<b>Total 60-64</b>	8,790	5.0%	2,947	3.9%	218,786	4.8%
<b>Total 65-69</b>	6,967	4.0%	2,407	3.2%	173,638	3.8%
<b>Total 70-74</b>	5,202	3.0%	1,718	2.3%	131,190	2.9%
<b>Total 75-79</b>	4,167	2.4%	1,298	1.7%	102,036	2.2%
<b>Total 80-84</b>	2,932	1.7%	918	1.2%	70,113	1.5%
<b>Total 85+</b>	2,722	1.6%	718	1.0%	58,416	1.3%

- In County Galway in 2011 the largest proportion of people were in the 35 – 39 age category (8.1%)
- In Galway City in 2011 the largest proportion of people were in the 25 – 29 age category (12.3%)
- In the State in 2011 the largest proportion of people were in the 30 – 34 age category (8.1%)

**Figure 1** Proportion of Population by Age Categories 2011, Galway County, Galway City & the State

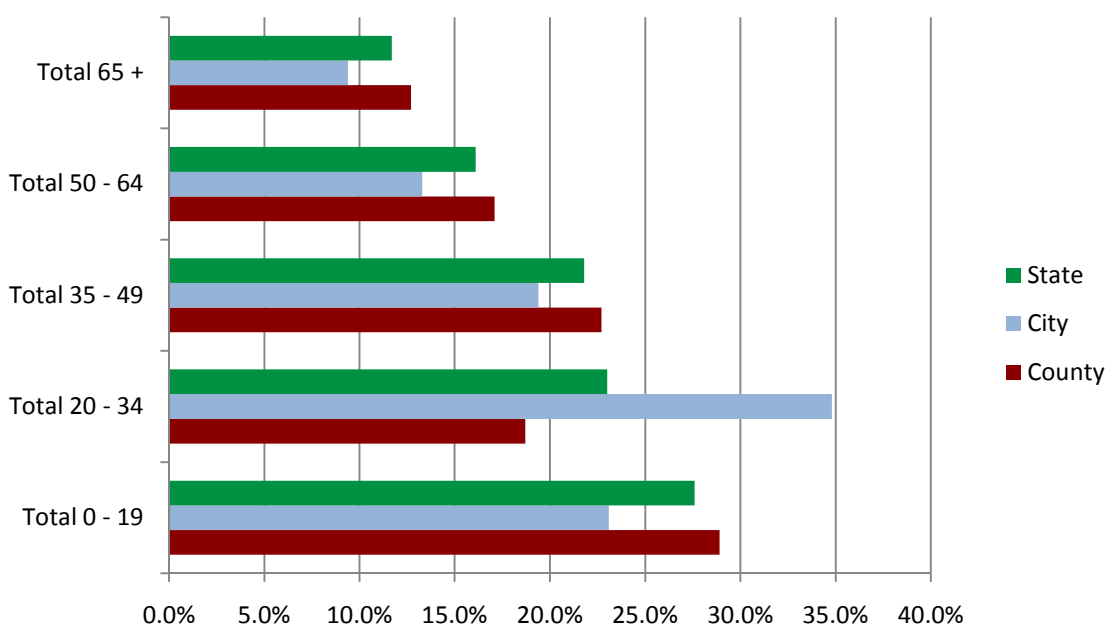


**Table 2** Number and Proportion of Population by Age Categories 2011 for Galway County, Galway City and the State

Age Category	County Galway		Galway City		State	
	No	%	No	%	No	%
<b>Total 0 - 19</b>	50,663	28.9%	17,446	23.1%	1,262,609	27.6%
<b>Total 20 - 34</b>	32,703	18.7%	26,273	34.8%	1,052,298	23.0%
<b>Total 35 - 49</b>	39,742	22.7%	14,663	19.4%	1,000,258	21.8%
<b>Total 50 - 64</b>	30,026	17.1%	10,088	13.3%	737,694	16.1%
<b>Total 65 +</b>	21,990	12.7%	7,059	9.4%	535,393	11.7%

- County Galway has a larger proportion of people in the age category 0 – 19 (28.9%) than the City (23.1%).
- The City has a much larger proportion of people in the 20 – 34 age category (34.8%) than in the County (18.7%)
- County Galway has a slightly larger proportion of people in the 35 – 49 category (22.7%) than in the City (19.4%)
- County Galway has a larger proportion of people in the 50 – 64 category (17.1%) than in the City (13.3%)
- County Galway has a larger proportion of people in the 65 + category (12.7%) than in the City (9.4%)

**Figure 2** Proportion of Population by Age Categories 2011, Galway County, Galway City & the State

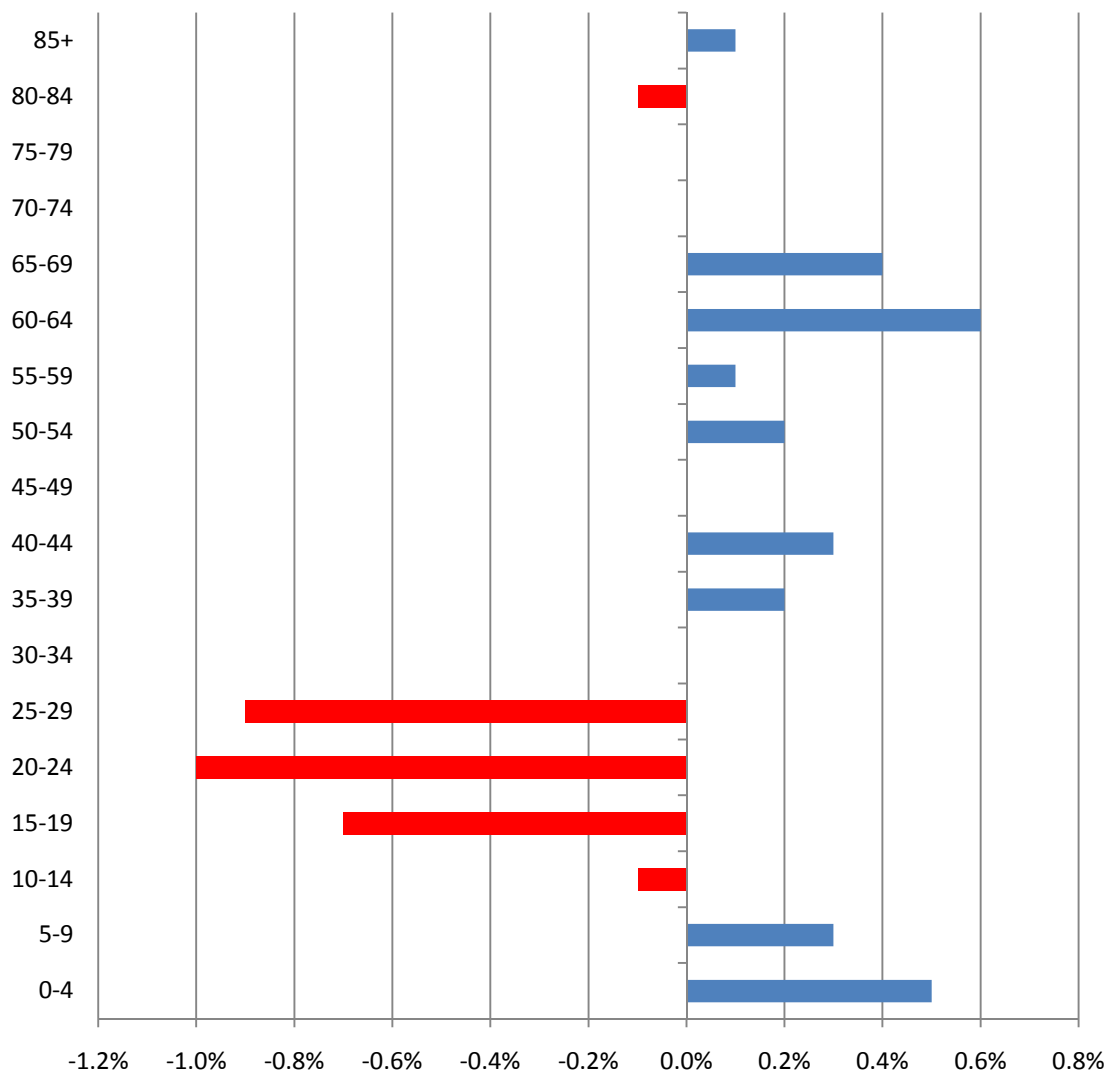


**Table 3 Population by Age Categories County Galway 2011 & % Change in Population**

Age Category	2006		2011		Change Population 2006 - 2011
	No	%	No	%	
<b>Total 0-4</b>	11,959	7.5%	14,091	8.0%	0.5%
<b>Total 5-9</b>	11,593	7.3%	13,310	7.6%	0.3%
<b>Total 10-14</b>	11,344	7.1%	12,292	7.0%	-0.1%
<b>Total 15-19</b>	11,101	7.0%	10,970	6.3%	-0.7%
<b>Total 20-24</b>	9,760	6.1%	8,971	5.1%	-1%
<b>Total 25-29</b>	10,955	6.9%	10,497	6.0%	-0.9%
<b>Total 30-34</b>	12,141	7.6%	13,235	7.6%	-
<b>Total 35-39</b>	12,610	7.9%	14,131	8.1%	0.2%
<b>Total 40-44</b>	11,723	7.4%	13,451	7.7%	0.3%
<b>Total 45-49</b>	10,969	6.9%	12,160	6.9%	-
<b>Total 50-54</b>	9,837	6.2%	11,198	6.4%	0.2%
<b>Total 55-59</b>	8,869	5.6%	10,038	5.7%	0.1%
<b>Total 60-64</b>	7,027	4.4%	8,790	5.0%	0.6%
<b>Total 65-69</b>	5,661	3.6%	6,967	4.0%	0.4%
<b>Total 70-74</b>	4,811	3.0%	5,202	3.0%	-
<b>Total 75-79</b>	3,776	2.4%	4,167	2.4%	-
<b>Total 80-84</b>	2,794	1.8%	2,932	1.7%	-0.1%
<b>Total 85+</b>	2,326	1.5%	2,722	1.6%	0.1%

- Between 2006 – 2011 in County Galway the 60 – 64 age category saw the biggest increase in people followed by the 0 – 4 age category
- The 25 – 29 age category saw the biggest decrease in people followed by the 15 – 19 age category.

**Figure 3 % Change in Population 2006 - 2011 in County Galway by Age Category**



**Table 4 Average Age of Males and Females in County Galway in Aggregate Rural and Town Areas 2006 & 2011**

Area	2006		2011	
	Male	Female	Male	Female
Aggregate Rural Areas	36	37	36.9	37.6
Aggregate Town Areas	34.6	36.6	34.6	36

- The average age of males and female is higher in rural areas in 2011.
- The average age of females in both rural and towns areas in higher than males in 2011



**Table 5 Age Dependency\* Rates 2006 & 2011, Galway County, Galway City and the State**

Area	2006			2011		
	Young Age Dependence 0 - 14	Older Age Dependency 65 +	Total Age Dependency	Young Age Dependence 0 - 14	Older Age Dependency 65 +	Total Age Dependency
<b>County Galway</b>	33.2%	35%	51.7%	35%	19.4%	54.4%
<b>Galway City</b>	20.2%	11.1%	31.4%	22.3%	12.6%	34.9%
<b>State</b>	29.7%	16.1%	45.8%	31.9%	17.4%	49.3%

- County Galway's total age dependency has grown from 51.7% in 2006 to 54.4% in 2011. This is mostly likely because there were increases in population of children and older people and decreases in population in the middle age categories.
- Galway City (34.9%) has a much lower total age dependency rate than Galway County (54.4%). This is because proportionally there are a lot more people in the 20 – 34 age category living in the City.

\* The age dependency rates provide crude but useful indicators of the age structure of the population. The young and old dependency rates are calculated by expressing the young population (0-14 years) and the old population (aged 65 years and over) as percentages of the population of working age (15-64 years). The total age dependency rate is the sum of the young and old rates.

**Table 6 Population Aged 65 Years and Over Living Alone by Sex in County Galway 2011**

Age Group	% Both Sexes Living Alone	% Males living alone	% Females Living Alone
<b>65 - 69</b>	27.3%	23.7%	30.7%
<b>70 - 74</b>	31.1%	25.7%	35.9%
<b>75 - 79</b>	34.7%	27.4%	40.5%
<b>80 - 84</b>	37.6%	28.2%	43.9%
<b>85 +</b>	37.5%	30.1%	41.7%

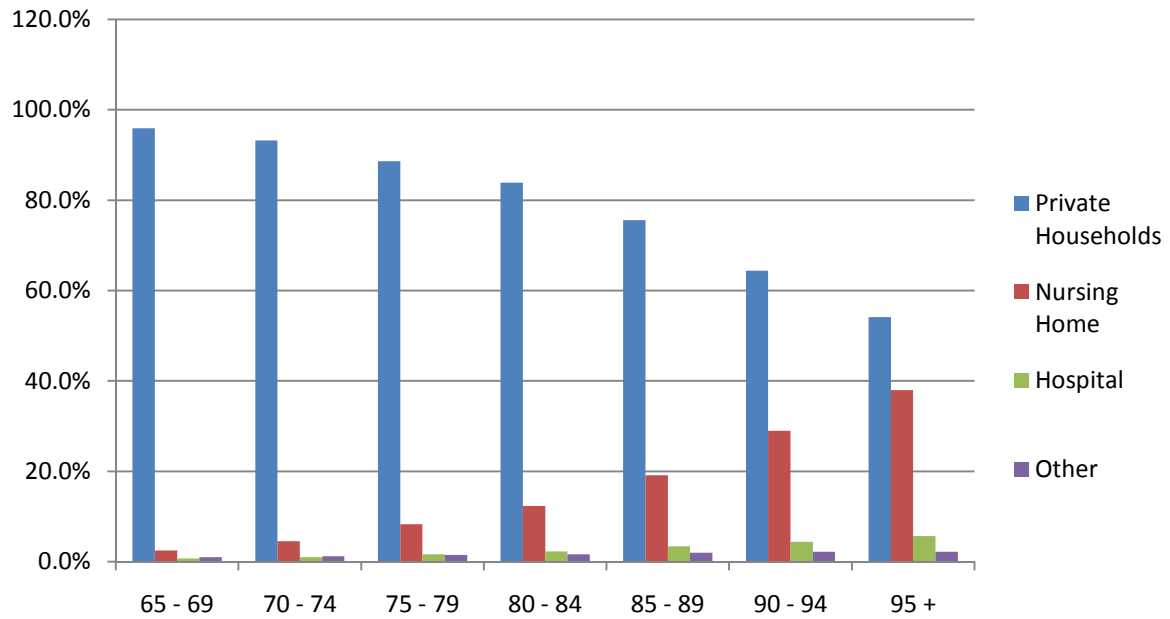
- Older females are more likely to live alone than older males

**Table 7** Proportion of Population in the State aged 65 years and over Enumerated at their Usual Place of Residence

Age	Private households	Nursing Home	Hospital	Other
65 - 69	95.9%	2.5%	0.7%	1.0%
70 - 74	93.2%	4.5%	1.0%	1.2%
75 - 79	88.6%	8.3%	1.6%	1.5%
80 - 84	83.9%	12.3%	2.3%	1.6%
85 - 89	75.6%	19.1%	3.4%	2.0%
90 - 94	64.4%	29.0%	4.4%	2.2%
95 +	54.1%	38.0%	5.7%	2.2%

- As the population gets older people are less likely to be in Private Households and more likely to be in a nursing home or hospital

**Figure 4** Proportion of Population in the State aged 65 years and over Enumerated at their Usual Place of Residence



The ED Loughatorick (near Woodford) has the 4<sup>th</sup> highest older average in the State.